

# HardieNail™

## Studless Siding Fastener User Guide

FEATURING PASLODE  
**tetraGRIP™**  
FASTENING TECHNOLOGY



**LESS CUTTING** - no need to cut to hit studs

**LESS WASTE** - use off-cuts in next course

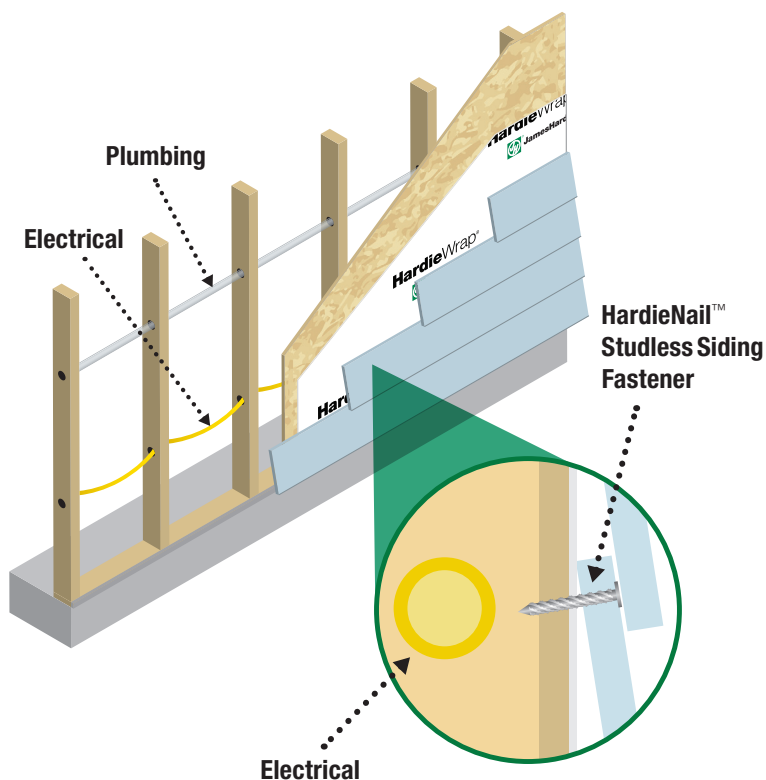
**LESS TIME** - average installation time reduction of 20%\*

**LESS CALL BACKS** - from hitting plumbing, HVAC or other service lines

**LESS COMPLEXITY** - no need to find and mark studs – no need to land joints on studs

\*Average reduction in siding installation time. Your results may vary. Call 1-888-JHARDIE for details.

## DOS AND DON'TS

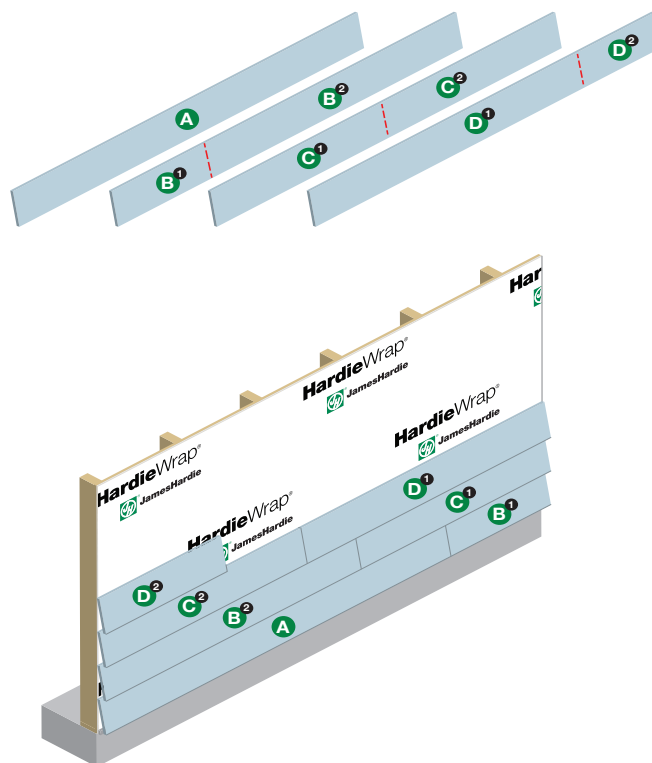


- Shorter fastener length means **DON'T** worry about hitting service lines.\*
- **DO** use 7/16 in. wood structural panels (WSP) attached to frame per code for the nailing base.

\*Always check and comply with local building code for service line placement.

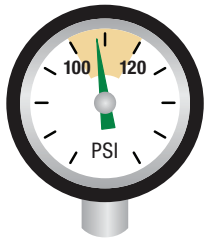
12 ft. pieces - none of which is wasted

--- Cut-Offs



- **DO** use off-cuts in next course; additional cutting and landing on studs not required.
- **DON'T** need to mark studs.

## THE BASICS



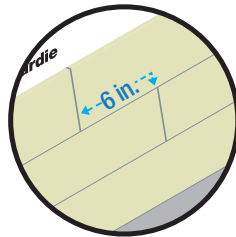
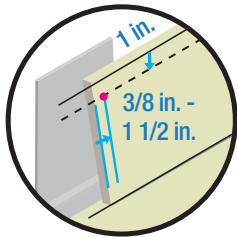
Countersunk,  
Fill & Add Nail

- Maintain the compressor outlet air pressure between 100psi and 120psi

- Drive HardieNail fasteners flush with the face of the plank, panel, or shingle
- If nail is countersunk, fill nail hole and add a nail

The following are fastener spacing examples for moderate basic wind speeds. For complete wind design loads refer to the HardieNail™ Studless Siding Fastener Technical Data Sheet at [jameshardiepros.com](http://jameshardiepros.com)

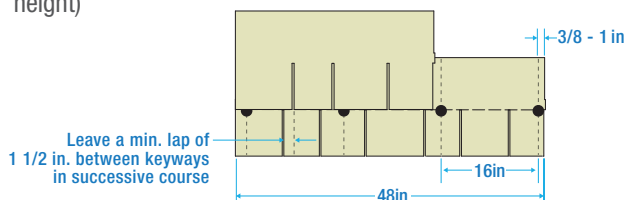
### HardiePlank®



- Place the HardieNail fastener 1 in. from top edge and 3/8 in. - 1 1/2 in. from the ends of the HardiePlank lap siding
- Place a HardieNail fastener every 16 in. o.c. (8.25 in. HardiePlank siding: Provides  $V_{asd}^1 = 101$  mph /  $V_{ult}^2 = 130$  mph for Exposure Category C at 30 ft. mean roof height)
- Space butt joints a minimum of 6 in. apart

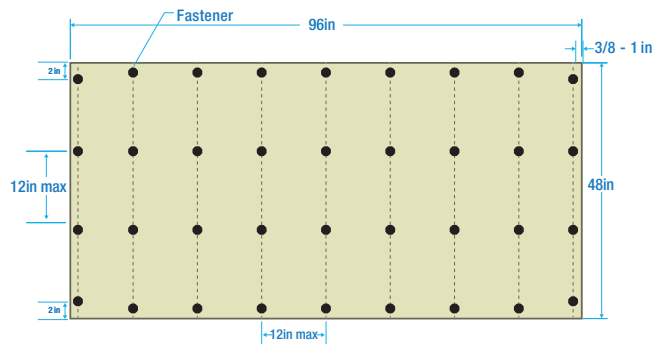
### HardieShingle®

- Place HardieNail fasteners from 3/8 in. to 1 in. from the edge of the HardieShingle® siding
- Place a HardieNail fastener every 16 in. o.c. (Provides  $V_{asd}^1 = 95$  mph /  $V_{ult}^2 = 123$  mph for Exposure Category C at 30 ft. mean roof height)



### HardiePanel®

- Place HardieNail fasteners from 3/8 in. to 1 in. from the edge of the HardiePanel® vertical siding
- Place HardieNail fastener every 12 in. x 12 in. (Provides  $V_{asd}^1 = 91$  mph /  $V_{ult}^2 = 118$  mph for Exposure Category C at 30 ft. mean roof height)



**IMPORTANT:** This document is not intended to take the place of James Hardie published installation instructions. Failure to follow James Hardie written installation instructions and comply with applicable building codes may violate local laws, affect building envelope performance and may affect warranty coverage. Failure to comply with all health and safety regulations when cutting and installing this product may result in personal injury. Before installation, confirm you are using the correct HardieZone® product instructions by visiting [hardiezone.com](http://hardiezone.com) or call 1-866-942-7343 (866-9-HARDIE).

If you are a specifier or other responsible party for a project, ensure the information in these specifications is appropriate for the application you are planning and that you undertake specific design and detailing for areas which fall outside the scope of these specifications.

<sup>1</sup> $V_{asd}$  = nominal design wind speed, ASCE 7-05, Wall Zone 5, 2009 IBC, 2009 & 2012 IRC, Exposure Category C at 30 ft. mean roof height.

<sup>2</sup> $V_{ult}$  = ultimate design wind speed, ASCE 7-10, Wall Zone 5, 2012 & 2015 IBC, 2015 IRC, Risk Category II, Exposure Category C at 30 ft. mean roof height.



Contact your local technical sales representative to learn more.

© 2017 James Hardie Building Products Inc. All Rights Reserved. TM, SM, and ® denote trademarks or registered trademarks of James Hardie Technology Limited.  
The Paslode and TetraGrip marks are trademarks of Illinois Tool Works Inc. SP1746 07/17



**JamesHardie**

Siding | Trim